

专业服务 创造价值

Professional Solutions Create More Value

JB系列桩架

JB Series Hydraulic Walking
Piling Rig



百年历史积淀，孕育强大技术创新实力，产品屡次刷新行业施工能力纪录。筒式柴油打桩锤、全液压步履式打桩架、全液压履带式打桩架、多轴式连续墙钻机、TRD工法机、植桩工法钻机等一大批产品领跑市场，已成为桩工机械行业的标杆。



上海工程机械厂有限公司（以下简称上工机械），成立于1921年。长期以来始终专注于地下基础施工领域，专业为高速公路、高层建筑、桥梁、地铁、机场、码头、电站等大型、特大型工程提供地下基础施工设备和整体解决方案，包括TRD工法机、静钻根植工法钻机、全回转套管钻机、DCM处理系统、多功能套管螺旋钻机、多轴式连续墙钻机、全液压步履式打桩架、全液压履带式打桩架、筒式柴油打桩锤、电驱振动锤、液压打桩锤、搓管机、高压旋喷钻机等多种产品系列。

上工机械始终坚持自主创新，不断推动地下基础施工行业的发展与进步。公司以技术中心为新产品研发平台，拥有一支专业知识扎实、开发经验丰富的技术研发团队。近年来，公司先后获得了上海市高新技术企业、上海市科技小巨人（培育）企业、上海市专利试点企业、上海市著名商标、上海市名牌产品、上海市科技进步一等奖、国家科技进步二等奖等荣誉称号。

Shanghai Engineering Machinery Co., Ltd. (SEMW)—founded in 1921. SEMW is specialized in design, manufacturing and distribution of pile driving and deep foundation equipment. SEMW currently produces Trench Cutting & Re-mixing Deep Wall Equipments, SDP Series Pre-bored Pre-cast Piling Equipment, CRD-200H Casing Rotator, Deep Cement Mixing System, Dual Power Rotary Auger, Multi-shaft Agitating Augers, Hydraulically driven Pile Driving Rigs, Hydraulic Walking Piling Rigs, D series Diesel Pile Hammers, Vibratory Hammers, Hydraulic Hammers, Rammed Shaft Casing Oscillators. Our products are widely used on high profile and long term engineering projects, such as, expressways, skyscrapers, bridges, metro stations, airports, deep-water docks, and power stations.

SEMW has been dedicated to deep foundations. With years of independent research and development, specialized piling equipments have been produced and used in many big and Key projects of China. We built up a Research and Develop team of qualified specialists and experienced engineers. In recent years, SEMW products have been awarded "Shanghai New Hi-tech Achievement Transformation Project", "Shanghai Famous Trademark", "First prize of Shanghai Scientific and Technological Progress Award", "Second prize of national science and technology progress", etc.

With a hundred years of history, we have developed strong technological innovation strength□ our products repeatedly refresh the industry construction capacity record. Piles of products lead the market, such like Diesel Pile Hammer, Hydraulic Walking Piling Rig, Hydraulic Pile Driving Rig, Multi-shaft Agitating Auger, Trench Cutting & Re-mixing Deep Wall Equipments, Pre-bored Pre-cast Piling Equipment, have become a benchmark in the piling machinery industry.



你需要的不只是一台桩架，而是一个解决方案

WHAT YOU NEED IS NOT JUST A PILING RIG, BUT A TURNKEY SOLUTION

作为地下基础施工整体解决方案提供商，上工机械始终坚持“专业服务，创造价值”的发展理念，力求为客户创造更大经济效益。追求更高客户满意度，是我们不懈的目标。

"Professional Solutions Create More Value." SEMW delivers on the promise of making more and more benefit for our customers and satisfying their needs. We will keep providing good products and better service.

选择上工机械的 6大理由

TOP 6 REASONS TO CONSIDER SEMW EQUIPMENTS



术业专攻 PROFESSIONAL MANUFACTURER

国内较早从事地下基础施工机械，专注地下基础施工机械设计制造数十载

SEMW used to be the first deep foundation equipment manufacturer in China. For now, we are dedicated to design and produce deep foundation machines for over a decade.



强势产品 GOOD PRODUCTS

产品性能优越，质量稳定可靠，产品始终是我们的核心竞争优势

Our products feature super power, high efficiency, and stability, which deliver excellent productivity for a variety of soil conditions.



市场地位 INCREASING MARKET SHARE

数十年来，市场占有率一直位列国内地下基础施工机械行业前茅，一直被模仿，从未被超越

For a decade, our increasing market share in domestic deep foundation industry never been surpassed by the competitors.



服务保障 BETTER SERVICE

提供从售前到售中、售后全方位的差异化增值服务，保障客户效益的更大化

Provide a comprehensive range of differentiated value-added services from pre-sale to in-sale and after-sale to maximize customer benefits.



案例保证 SUCCESSFUL CASES

施工案例遍布世界多个地区，广受客户好评

Our products are well received around the world with those successful cases.



优势资源 EXPANDED RESOURCES

完善的供应链资源，满足客户的各种需求

We have fully developed supply chain resources for better serving our customers.

上工机械多款桩架产品，总有一款适合您
SEMW PILING RIGS OF MANY RANGES, IT IS YOUR
BEST CHOICE!



JB系列全液压步履式打桩架

JB series Hydraulic Walking Piling Rigs

JB系列全液压步履式打桩架是公司自主研发的集机、电、液一体化步履式打桩架，具有完全自主知识产权，并获2009年度上海市高新技术成果转化项目荣誉证书。

本产品适应各种桩基施工需求，尤其能满足深基础施工中广泛采用的地下连续墙施工工艺（即SMW工法），亦可悬挂柴油打桩锤、静钻根植工法钻机等各种基础施工设备，是高架道路、高速公路、桥梁、港口、码头、地铁车站和高层建筑中桩基础施工的多功能、高稳定性施工设备。

JB series Hydraulic Walking Piling Rig is famous design for highly integration of electric, hydraulic and mechanic piling rig. It owns completely the Independent Property Rights and has been awarded certificates from Chinese government due to its advanced technology. The rig provides excellent performance, reliable working, is widely used in SMW method (Soil Mixing Wall method). The rig can be attached with diesel pile hammer, pre-bored pre-cast piling equipment, etc. It is suitable for various piling and foundation conditions, such as, elevated highways, expressways, bridges, ports, water docks, metro stations and skyscrapers.



1 为重型桩基础作业量身定制，更稳定高效

MORE EFFECTIVE, STABLE AND DURABLE

- 专为重型桩基础作业设计的立柱、主平台和行走机构，确保桩架工作稳定、可靠和作业效率高。
- 采用耐重型结构工作底盘。
- The leader, main platform and walking gear are designed for heavy-duty pile driving, to ensure more stable and effective work.
- Weight carrier of bigger load bearing.

2 合理的结构设计，安装运输更便捷

EASY FOR ASSEMBLY AND TRANSPORTATION

- 整机采用模块化设计和积木式拼装，装拆快捷、方便，有利于施工场地的转移。
- 主平台外伸梁以液压油缸为动力，采用销轴回转结构，免去拆装烦恼。通过部套解体装运，完全满足运输宽度和高度要求。
- Modular structure design, easy for assembly and disassembly.
- Out triggers of the platform with the rotary pin structure, is driven by cylinder, which saves trouble of disassembly. Can be disassembled and transported by parts, easy for transportation.

3 采用先进的电液控制技术，质量稳定的进口液压件和电气系统

ADVANCED ELECTRO-HYDRAULIC CONTROL SYSTEM AND TECHNOLOGY

- 主、副液压卷扬机采用先进的电比例控制技术，可实现卷扬机无级变速和锁定任意速度，有效确保桩架工作稳定、可靠，适应施工需要。
- 主泵、控制阀、压力表、卷扬机等均采用国内外知名品牌。
- Both main drum and auxiliary drum are under electro-hydraulic proportional control, available for variable speed control and lock any speed.
- Main pump, control valve, pressure gauge, drums are all using domestic and foreign well-known brands.



4 多种选配监测装置，施工安全更有保障

PRACTICAL AND RELIABLE OPERATION MONITORING SYSTEM

- 在提供立柱自带标准角度计的前提下，更可提供电感载荷角度监测仪（选配件），给驾驶员及时反馈即时立柱倾斜情况及拉拔载荷的大小，并在危险情况下发出报警。与ZLD超级系列钻孔相配套作业时可选购添加部分传感器，即可实现上述操作功能。
- 深层搅拌桩监测仪（选配件）可及时反馈桩深、钻进速度、总浆量、段浆量，并根据桩号打印输出。
- Standard leader with goniometer and inductive load angle monitor (optional) provide instant information about batter piling and pulling force, set alarm while in danger. The previous functions can be achieved while the piling rig working with ZLD series agitating auger and sensors (optional).
- Deep mixing pile monitor (optional) provides data of pile depth, piling speed, the amount of slurry, and output of the information.

5 体现人机工程设计的宽阔舒适驾驶室，操作更简便

COMFORTABLE OPERATION CAB FOR EASY CONTROL

- 采用宽敞、全透明的驾驶室，隔离良好、明亮、安静，提高驾驶员的舒适度。
- 采用便捷舒适的“手柄式”操纵系统，大大提高施工效率，液压系统操作简单方便，所有油缸的操纵手柄全部置于驾驶员前方，而主、副液压卷扬机操纵手柄安置在驾驶员的右手侧，更好地方便操作和控制。
- 驾驶室内预留钻孔机操控箱、电感载荷角度监测仪（选配件）、深层搅拌桩监测仪（选配件）的安装位置，实现便捷的单人操纵打桩架及钻孔机。
- Well insulated operator's room with five wind shields assures bright, quiet environment with minimum fatigue.
- Hydraulic actuated winch control levers allow well performance and easy control.
- Space for drill control box, inductive load angle monitor (optional), deep mixing monitor (optional) is reserved in the operator's room, make the single-driver control easy and reliable.



JB160 技术性能特点

TECHNICAL PERFORMANCE CHARACTERISTICS OF JB160

1

JB160A采用大容量卷筒，标准配置的立柱长度为39m，最高可加至42m，可满足多轴式连续墙钻孔机进行SMW工法施工。

JB160A is equipped with capacious drums. Standard leader is 39m high (Max.42m), suitable for SMW method.

2

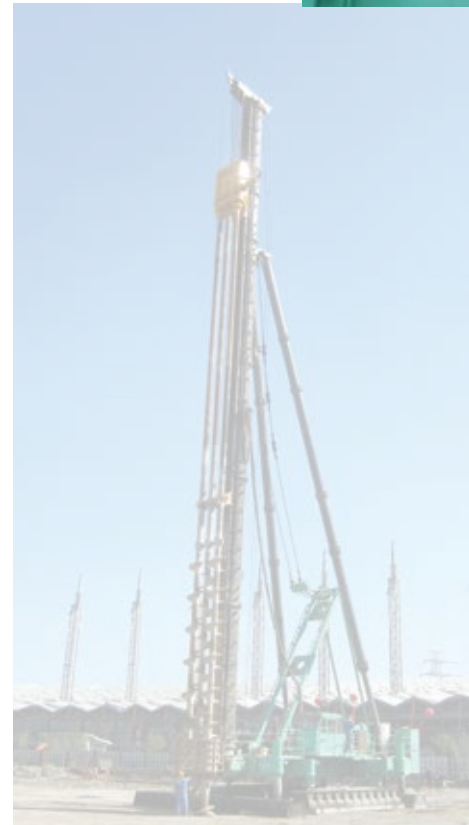
JB160A横向步履油缸步长达3100mm，能充分满足SMW工法施工移位需要。独有的立柱水平微调机构，行程达400mm，顶升油缸行程达到900mm，有效增加施工灵活性。独有的自行起架机构，不借助辅助起重机，JB160A可完成39m立柱自行起架作业。

Length of horizontal cylinder reaches up to 3100mm, easy to move while using. SMW method. Horizontal stroke of the cylinder reaches up to 400mm, lifting cylinders ensure a 900mm-lift-height, providing more flexibility in construction work. Unique positioning structure design guarantees a self-erect without help of service crane. JB160A can make 39m height.

3

JB160A获国家授权专利7项，其中发明专利2项，具有完全自主知识产权。

JB160A was granted complete intellectual property rights and 7 authorized patents, including 2 patents for invention.



专利证书 PATENT CERTIFICATE



4

JB160B在设备结构及电液部分进行了局部优化设计；驾驶室移动采用油缸推拉，一键切换工作状态与运输状态，便于设备进行工地转场。

JB160B carried out local optimization design in the equipment structure and electro-hydraulic part; Operator's room adopts oil cylinder control, one-key switch between working state and transport state, facilitating equipment site transfer.

5

JB160B步履机构外侧采用平面设计，便于施工中清除落在步履外侧的淤泥，有效保护设备及提高施工质量。采用双速高性能卷扬，能更好的满足不同施工工法需求。

JB160B's walking mechanism adopts plane design, which is convenient to remove the silt on the outside of step, effectively protect the equipment and improve the construction quality. Double high-speed winches which can better meet the needs of different construction methods.

6

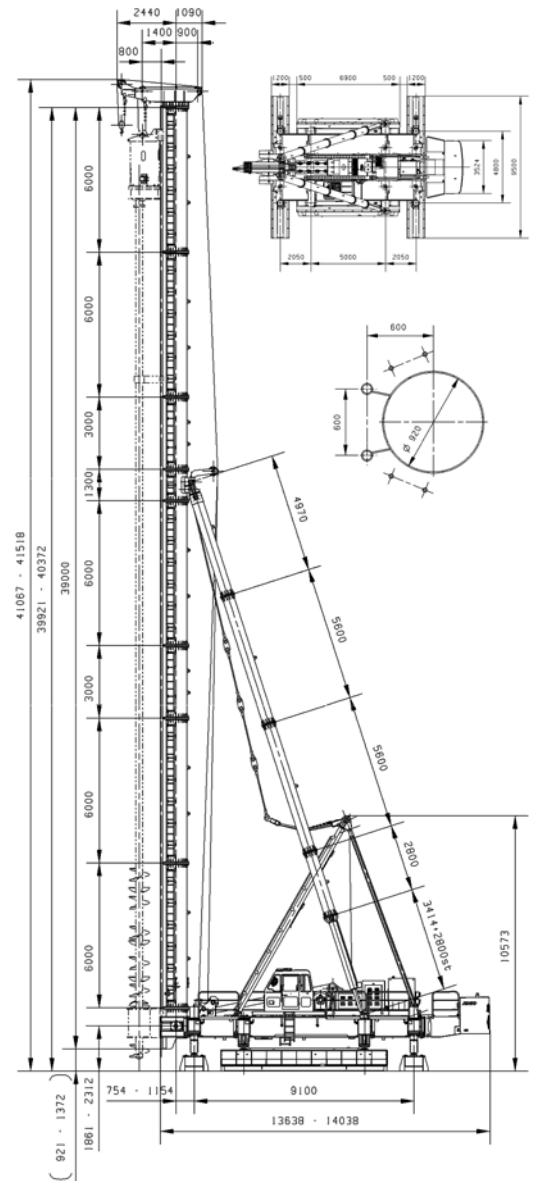
JB160B液压管路进行优化布管设计，采用全进口液压胶管及快速接头，使用寿命长，可靠性高。

JB160B hydraulic pipeline is optimized for pipe layout design, with all imported hydraulic hose and quick joints, long service life and high reliability.



主要技术参数 Specifications

项目 Item	JB160A全液压步履式打桩架 JB160A Hydraulic Walking Piling Rig	
立柱总长度 (m) Total length of leader (m)	21 ~ 39	
立柱筒体直径 (mm) Diameter of leader (mm)	φ920	
立柱导轨中心距 (mm) Center distance between leader and mounted equipment (mm)	600 × φ101.6	
立柱角度调整范围 (左右方向) (°) Leader inclination angle (left to right) (°)	± 1.5	
斜撑油缸行程 (mm) Backstay stroke (mm)	2800	
立柱微调油缸行程 (mm) Leader trimming cylinder stroke (mm)	400	
最大钻孔机型号 Max. auger model	ZLD180/85-3-M ₂ -S	
最大柴油锤型号 Max. diesel hammer model	D160	
最大立柱长度 (m) Max. leader length (m)	39	
最大立柱长度时最大拉拔力 (kN) Max. pulling force (with Max. leader) (kN)	706.3	
液压卷扬机 (吊挂钻机、柴油锤) Hydraulic winch (for mounting auger, diesel hammer)	单绳拉力 (kN) Pulling force of single rope (kN)	91.5max
	绳速 (m/min) Winding and rewinding peed (m/min)	0 ~ 26
	钢丝绳直径 (mm) Rope diameter (mm)	φ21.5
液压卷扬机 (起架、吊钻杆、吊桩) Hydraulic winch (for uplift, drilling pipe, pile)	单绳拉力 (kN) Pulling force of single rope (kN)	68max
	绳速 (m/min) Winding and rewinding peed (m/min)	0 ~ 32
	钢丝绳直径 (mm) Rope diameter (mm)	φ20
容绳量 (m) Drum capacity (m)	550	
容绳量 (m) Drum capacity (m)	265	
平台回转角度 (°) Swing angle (°)	± 10	
桩架横向移动 Transverse travel	速度 (m/min) Travel speed (m/min)	< 4.5
	步长 (mm) Travel step (mm)	3100
桩架纵向移动 Vertical travel	速度 (m/min) Travel speed (m/min)	< 2.7
	步长 (mm) Travel step (mm)	800
桩架顶升 Uplift of the track	速度 (m/min) Speed (m/min)	< 0.55
	高度 (mm) Height (mm)	+450 ~ -450
履板轨距 Distance between tracks	工作时 (mm) Working (mm)	9100
	移位时 (mm) Travelling (mm)	4800
轮距 Distance between pulleys in track	工作时 (mm) Working (mm)	4800
	移位时 (mm) Travelling (mm)	5000
横向履板 Transverse-moving track	长度 (mm) Length (mm)	9500
	宽度 (mm) Width (mm)	1200
纵向履板 Vertical-moving track	长度 (mm) Length (mm)	6900
	宽度 (mm) Width (mm)	1700
外伸梁与平台联接方式 Connection between outrigger beam and platform	销轴回转、油缸扩伸 Pin rotary, cylinder expanding	
接地比压 (Mpa) Average ground pressure (Mpa)	≤ 0.1	
电动机功率 (kw) Motor power (kw)	45	
液压系统压力 (Mpa) Hydraulic crowded system (Mpa)	25/20	
液压系统操纵方式 Hydraulic crowded system operation	手动及电气控制 Manual & electric control	
打桩机总重量 (t) Total weight of piling rig (T)	≈ 130	



■ 技术参数的更改恕不另行通知

Specifications are subjected to change without prior notice.

■ 可根据客户需求，立柱最大可接至42米

Leader length can be extended to 42m according to special requirement.

项目 Item	JB160B全液压步履式打桩架 JB160B Hydraulic Walking Piling Rig		
立柱总长度 (m) Total length of leader (m)	30 ~ 42		
立柱筒体直径 (mm) Diameter of leader (mm)	ø920		
立柱导轨中心距 (mm) Center distance between leader and mounted equipment (mm)	600 × ø101.6		
立柱角度调整范围 (左右方向) (°) Leader inclination angle (left to right) (°)	± 1.5		
斜撑油缸行程 (mm) Backstay stroke (mm)	2800		
立柱微调油缸行程 (mm) Leader trimming cylinder stroke (mm)	400		
最大钻孔机型号 Max. auger model	ZLD100-3		
最大柴油锤型号 Max. diesel hammer model	D160		
最大立柱长度 (m) Max. leader length (m)	42		
最大立柱长度时最大拉拔力 (kN) Max. pulling force (with Max. leader) (kN)	706.3		
液压卷扬机 (吊挂 钻孔机、柴油锤) Hydraulic winch (for mounting auger, diesel hammer)	快速 High-Speed	单绳拉力 (kN) Pulling force of single rope (kN)	95max
		绳速 (m/min) Winding and rewinding peed (m/min)	0 ~ 20.5
	慢速 Low-Speed	单绳拉力 (kN) Pulling force of single rope (kN)	60max
		绳速 (m/min) Winding and rewinding peed (m/min)	0 ~ 33
		钢丝绳直径 (mm) Rope diameter (mm)	ø21.5
	容绳量 (m) Drum capacity (m)	550	
液压卷扬机 (起架、吊钻杆、吊桩) Hydraulic winch (for uplift, drilling pipe, pile)		单绳拉力 (kN) Pulling force of single rope (kN)	68max
		绳速 (m/min) Winding and rewinding peed (m/min)	0 ~ 32
		钢丝绳直径 (mm) Rope diameter (mm)	ø20
		容绳量 (m) Drum capacity (m)	265
平台回转角度 (°) Swing angle (°)	± 10		
桩架横向移动 Transverse travel	速度 (m/min) Travel speed (m/min)	< 4.5	
	步长 (mm) Travel step (mm)	3100	
桩架纵向移动 Vertical travel	速度 (m/min) Travel speed (m/min)	< 2.7	
	步长 (mm) Travel step (mm)	800	
桩架顶升 Uplift of the track	速度 (m/min) Speed (m/min)	< 0.55	
	高度 (mm) Height (mm)	+450 ~ -450	
履板轨距 Distance between tracks	工作时 (mm) Working (mm)	9100	
	移位时 (mm) Travelling (mm)	4800	
轮距 Distance between pulleys in track	工作时 (mm) Working (mm)	4800	
	移位时 (mm) Travelling (mm)	5000	
横向履板 Transverse-moving track	长度 (mm) Length (mm)	9500	
	宽度 (mm) Width (mm)	1200	
纵向履板 Vertical-moving track	长度 (mm) Length (mm)	6900	
	宽度 (mm) Width (mm)	1700	
外伸梁与平台联接方式 Connection between outrigger beam and platform	销轴回转、油缸扩伸 Pin rotary, cylinder expanding		
接地比压 (Mpa) Average ground pressure (Mpa)	≤ 0.1		
电动机功率 (kw) Motor power (kw)	45		
液压系统压力 (Mpa) Hydraulic crowded system (Mpa)	25/20		
液压系统操纵方式 Hydraulic crowded system operation	手动及电气控制 Manual & electric control		
打桩机总重量 (t) Total weight of piling rig (T)	≈ 130		

JB170 技术性能特点

TECHNICAL PERFORMANCE CHARACTERISTICS OF JB170

1

采用大容量卷筒，JB170最高53米立柱，配合超深三轴连续墙钻机，施工最大深度可达46米，配合ZLD五轴连续墙钻孔机施工时最大深度达30米。

JB170 leader can be extended up to 53m, with the ultra deep ZLD three-shaft Agitating Auger, the maximum construction depth can reach 46m, together with ZLD five-shaft agitating auger, it can drill holes of depth up to 30m.

2

JB170顶升油缸增至8个，增加场地适应性。

JB170 contains 8 lifting cylinders, increase site adaptability.

3

独有的自行起架机构，不借助辅助起重机，JB170可完成53米立柱自行起架作业。

Unique positioning structure design guarantees a self-erect without help of service crane. JB170 can make 53m height.



4

JB170增加液压油箱外罩，整体外型美观，防止液压油箱在施工作业暴晒，对油箱和滤油器起到了保护作用。

JB170 hydraulic oil tank enclose with good appearance and prevent excessive shine, Protect oil tank and filter at construction site.

5

JB170自带立柱报警装置（选配件），在立柱起架拉伸至70°时自动报警，提示驾驶员及时注意，防止立柱拉过90°。

Leader's inclination angle lift up to 70°, JB170 will set alarm by built-in alarm device (optional), to prevent it excessive tilt.

6

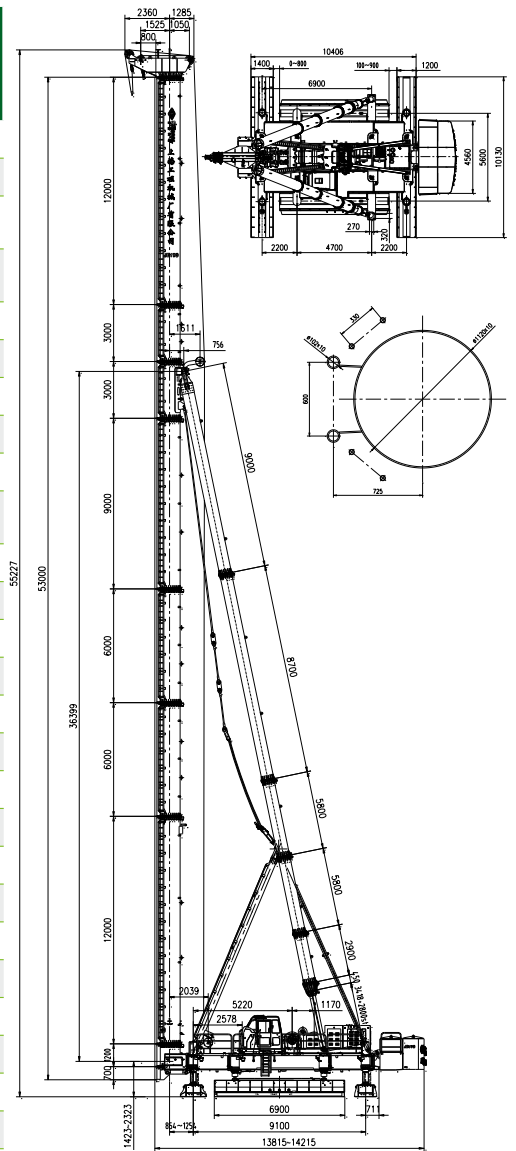
JB170采用可移动驾驶室，便于安装运输，节约时间高效施工。

Removable operator's room, easy for load and transport, ensure effective work.



主要技术参数 Specifications

项目 Item	JB170全液压步履式打桩架 JB170 Hydraulic Walking Piling Rig								
立柱总长度 (m) Total length of leader (m)	23 ~ 53								
立柱筒体直径 (mm) Diameter of leader (mm)	ø1120								
立柱导轨中心距 (mm) Center distance between leader and mounted equipment (mm)	600 × ø101.6								
立柱角度调整范围 (左右方向) (°) Leader inclination angle (left to right) (°)	± 1.5								
斜撑油缸行程 (mm) Backstay stroke (mm)	2800								
立柱微调油缸行程 (mm) Leader trimming cylinder stroke (mm)	400								
最大钻孔机型号 Max. auger model	ZLD330/85-5-M ₃ -S								
最大柴油锤型号 Max. diesel hammer model	D160								
最大立柱长度 (m) Max. leader length (m)	53								
最大立柱长度时最大拉拔力 (kN) Max. pulling force (with Max. leader) (kN)	743								
液压卷扬机 (吊挂钻孔机、柴油锤) Hydraulic winch (for mounting auger, diesel hammer)	<table border="0"> <tr> <td>单绳拉力 (kN) Pulling force of single rope (kN)</td> <td>120max</td> </tr> <tr> <td>绳速 (m/min) Winding and rewinding peed (m/min)</td> <td>0 ~ 21</td> </tr> <tr> <td>钢丝绳直径 (mm) Rope diameter (mm)</td> <td>ø22</td> </tr> <tr> <td>容绳量 (m) Drum capacity (m)</td> <td>750</td> </tr> </table>	单绳拉力 (kN) Pulling force of single rope (kN)	120max	绳速 (m/min) Winding and rewinding peed (m/min)	0 ~ 21	钢丝绳直径 (mm) Rope diameter (mm)	ø22	容绳量 (m) Drum capacity (m)	750
单绳拉力 (kN) Pulling force of single rope (kN)	120max								
绳速 (m/min) Winding and rewinding peed (m/min)	0 ~ 21								
钢丝绳直径 (mm) Rope diameter (mm)	ø22								
容绳量 (m) Drum capacity (m)	750								
液压卷扬机 (起架、吊钻杆、吊桩) Hydraulic winch (for uplift, drilling pipe, pile)	<table border="0"> <tr> <td>单绳拉力 (kN) Pulling force of single rope (kN)</td> <td>110max</td> </tr> <tr> <td>绳速 (m/min) Winding and rewinding peed (m/min)</td> <td>0 ~ 18</td> </tr> <tr> <td>钢丝绳直径 (mm) Rope diameter (mm)</td> <td>ø22</td> </tr> <tr> <td>容绳量 (m) Drum capacity (m)</td> <td>300</td> </tr> </table>	单绳拉力 (kN) Pulling force of single rope (kN)	110max	绳速 (m/min) Winding and rewinding peed (m/min)	0 ~ 18	钢丝绳直径 (mm) Rope diameter (mm)	ø22	容绳量 (m) Drum capacity (m)	300
单绳拉力 (kN) Pulling force of single rope (kN)	110max								
绳速 (m/min) Winding and rewinding peed (m/min)	0 ~ 18								
钢丝绳直径 (mm) Rope diameter (mm)	ø22								
容绳量 (m) Drum capacity (m)	300								
平台回转角度 (°) Swing angle (°)	± 10								
桩架横向移动 Transverse travel	<table border="0"> <tr> <td>速度 (m/min) Travel speed (m/min)</td> <td>≤ 4.5</td> </tr> <tr> <td>步长 (mm) Travel step (mm)</td> <td>3100</td> </tr> </table>	速度 (m/min) Travel speed (m/min)	≤ 4.5	步长 (mm) Travel step (mm)	3100				
速度 (m/min) Travel speed (m/min)	≤ 4.5								
步长 (mm) Travel step (mm)	3100								
桩架纵向移动 Vertical travel	<table border="0"> <tr> <td>速度 (m/min) Travel speed (m/min)</td> <td>≤ 2.7</td> </tr> <tr> <td>步长 (mm) Travel step (mm)</td> <td>800</td> </tr> </table>	速度 (m/min) Travel speed (m/min)	≤ 2.7	步长 (mm) Travel step (mm)	800				
速度 (m/min) Travel speed (m/min)	≤ 2.7								
步长 (mm) Travel step (mm)	800								
桩架顶升 Uplift of the track	<table border="0"> <tr> <td>速度 (m/min) Speed (m/min)</td> <td>≤ 0.55</td> </tr> <tr> <td>高度 (mm) Height (mm)</td> <td>450</td> </tr> </table>	速度 (m/min) Speed (m/min)	≤ 0.55	高度 (mm) Height (mm)	450				
速度 (m/min) Speed (m/min)	≤ 0.55								
高度 (mm) Height (mm)	450								
履板轨距 Distance between tracks	<table border="0"> <tr> <td>工作时 (mm) Working (mm)</td> <td>9100</td> </tr> <tr> <td>移位时 (mm) Travelling (mm)</td> <td>4700</td> </tr> </table>	工作时 (mm) Working (mm)	9100	移位时 (mm) Travelling (mm)	4700				
工作时 (mm) Working (mm)	9100								
移位时 (mm) Travelling (mm)	4700								
轮距 Distance between pulleys in track	<table border="0"> <tr> <td>工作时 (mm) Working (mm)</td> <td>5600</td> </tr> <tr> <td>移位时 (mm) Travelling (mm)</td> <td>4700</td> </tr> </table>	工作时 (mm) Working (mm)	5600	移位时 (mm) Travelling (mm)	4700				
工作时 (mm) Working (mm)	5600								
移位时 (mm) Travelling (mm)	4700								
横向履板 Transverse-moving track	<table border="0"> <tr> <td>长度 (mm) Length (mm)</td> <td>10130</td> </tr> <tr> <td>宽度 (mm) Width (mm)</td> <td>1400/1200</td> </tr> </table>	长度 (mm) Length (mm)	10130	宽度 (mm) Width (mm)	1400/1200				
长度 (mm) Length (mm)	10130								
宽度 (mm) Width (mm)	1400/1200								
纵向履板 Vertical-moving track	<table border="0"> <tr> <td>长度 (mm) Length (mm)</td> <td>6900</td> </tr> <tr> <td>宽度 (mm) Width (mm)</td> <td>1700</td> </tr> </table>	长度 (mm) Length (mm)	6900	宽度 (mm) Width (mm)	1700				
长度 (mm) Length (mm)	6900								
宽度 (mm) Width (mm)	1700								
外伸梁与平台联接方式 Connection between outrigger beam and platform	销轴回转、油缸扩伸 Pin rotary, cylinder expanding								
接地比压 (Mpa) Average ground pressure (Mpa)	≤ 0.1								
电动机功率 (kw) Motor power (kw)	45								
液压系统压力 (Mpa) Hydraulic crowded system (Mpa)	25/20								
液压系统操纵方式 Hydraulic crowded system operation	手动及电气控制 Manual & electric control								
打桩机总重量 (t) Total weight of piling rig (T)	≈ 175								



■ 技术参数的更改恕不另行通知

Specifications are subjected to change without prior notice.

JB180 技术性能特点

TECHNICAL PERFORMANCE CHARACTERISTICS OF JB180

1

JB180最高60米立柱，配合ZLD超深系列连续墙钻孔机三轴施工时最大深度达53米，充分满足基坑围护和软土地基加固的施工要求。

JB180 leader can be extended up to 60m, together with ZLD series agitating auger, it can drill holes of depth up to 53m, which is the best choice for deep foundation reinforcement and soft soil conditions.

2

采用耐重型结构工作底盘，也可配合长螺旋钻、振冲锤进行大深度灌注桩作业。

Weight carrier of bigger load bearing, suitable for long Auger and vibration impact hammer, conducting large - depth filling pile operations.

3

JB180顶升油缸增至8个，增加场地适应性。

JB180 contains 8 lifting cylinders, increase site adaptability.



4

独有的自行起架机构，不借助辅助起重机，JB180可最高完成60米立柱的自行起架作业。

Unique positioning structure design guarantees a self-erect without help of service crane. JB180 can make 60m height.

5

JB180获国家授权专利6项，其中发明和实用新型专利各3项，具有完全自主知识产权。

JB180 was granted complete intellectual property rights and 6 patents, including 3 patents for invention and 3 patents for utility.

6

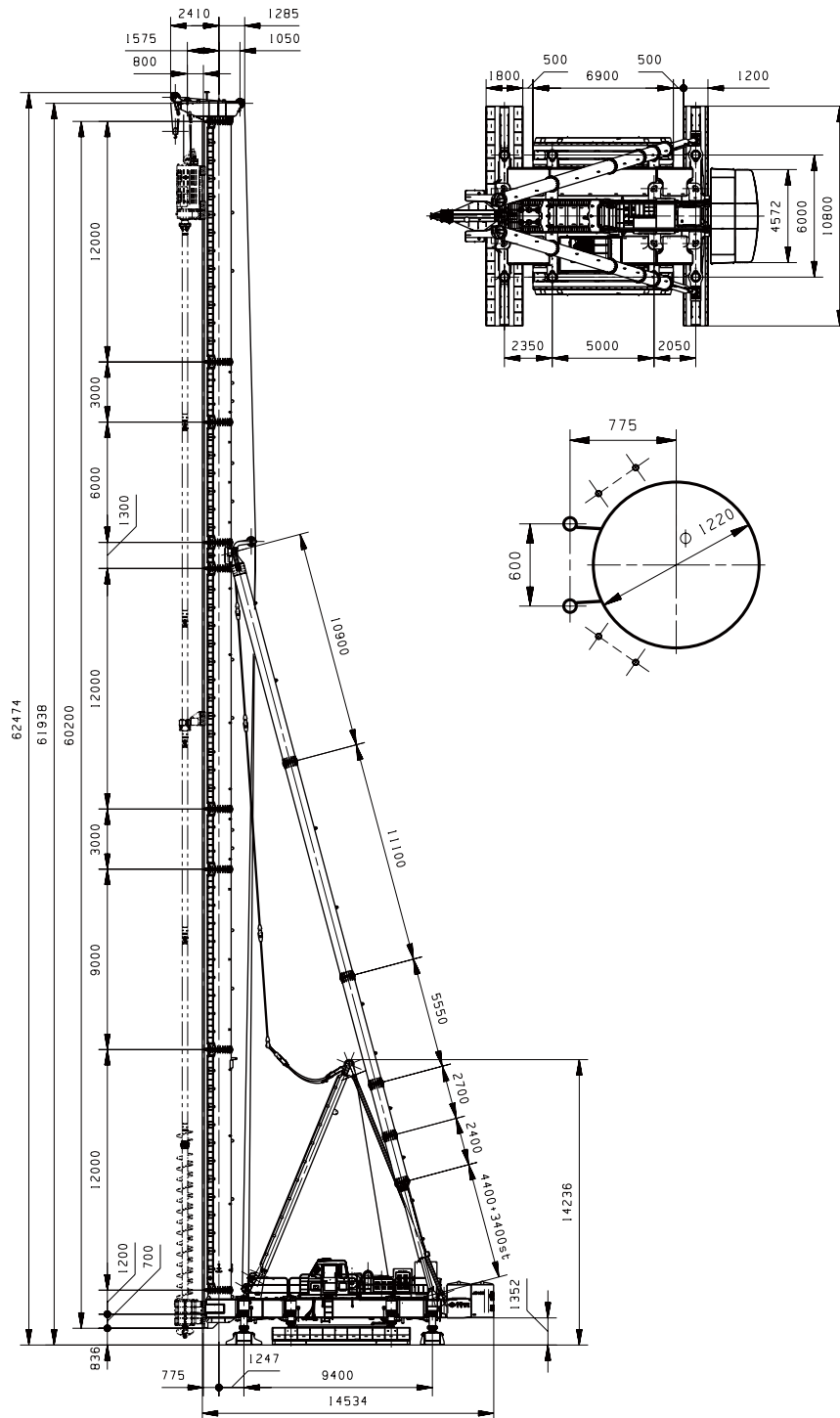
JB180可定制大尺寸驾驶室，安装空调设备（选配），提供人性化配置。

Customizable large operator room of JB180 can install air condition (optional), more humanization configuration.



主要技术参数 Specifications

项目 Item	JB180全液步履式打桩架 JB180 Hydraulic Walking Piling Rig	JB180A全液步履式打桩架 JB180A Hydraulic Walking Piling Rig	
立柱总长度 (m) Total length of leader (m)	21 ~ 60	21 ~ 46.2	
立柱筒体直径 (mm) Diameter of leader (mm)	ø1220	ø1220	
立柱导轨中心距 (mm) Center distance between leader and mounted equipment (mm)	600 × ø102	1000 × ø102	
立柱角度调整范围 (左右方向) (°) Leader inclination angle (left to right) (°)	± 1.5	± 1.5	
斜撑油缸行程 (mm) Backstay stroke (mm)	3400	3400	
立柱微调油缸行程 (mm) Leader trimming cylinder stroke (mm)	400	400	
最大钻机型号 Max. auger model	ZLD220/85-3-M ₂ -CS	DCM440/130-4-M ₄ -S1	
最大柴油锤型号 Max. diesel hammer model	D180	D180	
最大立柱长度 (m) Max. leader length (m)	60	46.2	
最大拉拔力 (kN) Max. pulling force (kN)	800	1400	
最大立柱长度时最大拉拔力 (kN) Max. pulling force (with Max. leader) (kN)	623	1200	
液压卷扬机 (吊挂 钻机、柴油锤) Hydraulic winch (for mounting auger, diesel hammer)	单绳拉力 (kN) Pulling force of single rope (kN)	100max	140max
	绳速 (m/min) Winding and rewinding peed (m/min)	0 ~ 21	0 ~ 24
	钢丝绳直径 (mm) Rope diameter (mm)	ø22	ø26
	容绳量 (m) Drum capacity (m)	835	800
液压卷扬机 (起 架、吊钻杆、吊 桩) Hydraulic winch (for uplift, drilling pipe, pile)	单绳拉力 (kN) Pulling force of single rope (kN)	110 max	110 max
	绳速 (m/min) Winding and rewinding peed (m/min)	0 ~ 20	30
	钢丝绳直径 (mm) Rope diameter (mm)	ø22	ø22
	容绳量 (m) Drum capacity (m)	300	300
平台回转角度(°) Swing angle (°)		± 10	± 10
桩架横向移动 Transverse travel	速度 (m/min) Travel speed (m/min)	<3.4	≤ 3.4
	步长 (mm) Travel step (mm)	3100	3100
桩架纵向移动 Vertical travel	速度 (m/min) Travel speed (m/min)	<1.3	≤ 1.3
	步长 (mm) Travel step (mm)	800	800
桩架顶升 Uplift of the track	速度 (m/min) Speed (m/min)	<0.44	≤ 0.44
	高度 (mm) Height (mm)	500	500
履板轨距 Distance between tracks	工作时 (mm) Working (mm)	9400	9400
	移位时 (mm) Travelling (mm)	6000	6000
轮距 Distance between pulleys in track	工作时 (mm) Working (mm)	6000	6000
	移位时 (mm) Travelling (mm)	5000	5000
横向履板 Transverse-moving track	长度 (mm) Length (mm)	10800	10800
	宽度 (mm) Width (mm)	1800/1200	1800/1200
纵向履板 Vertical-moving track	长度 (mm) Length (mm)	6900	6900
	宽度 (mm) Width (mm)	1700	2000
外伸梁与平台联接方式 Connection between outrigger beam and platform	销轴回转、油缸扩伸 Pin rotary, cylinder expanding	销轴回转、油缸扩伸 Pin rotary, cylinder expanding	
平均接地比压 (Mpa) Average ground pressure (Mpa)	≤ 0.1	≤ 0.1	
电动机功率 (kw) Motor power (kw)	45	75	
液压系统压力 (Mpa) Hydraulic crowded system (Mpa)	25/20	25/20	
液压系统操纵方式 Hydraulic crowded system operation	手动及电气控制 Manual & electric control	手动及电气控制 Manual & electric control	
打桩机总重量 (t) Total weight of piling rig (T)	≈ 195	≈ 197	



- 技术参数的更改恕不另行通知
Specifications are subjected to change without prior notice.

JB220 技术性能特点

TECHNICAL PERFORMANCE CHARACTERISTICS OF JB220

1

JB220打桩架主卷扬拉力达到14吨；陆上DCM处理系统专用桩架。

Pulling force of main winch reach to 14tons; Special frame for onshore DCM.

2

JB220驾驶室尺寸更大、可以放置DCM操作系统，操作更舒适，通过显示屏随时观察施工状态，施工更便捷。

JB220's cab has larger size and can be placed DCM operating system, more comfortable operate, observe the construction status by the display screen at any time, construction is more convenient.

3

JB220打桩架使用大直径立柱，可以承担很大的起拔力，可满足大型系列钻机对于大载荷的要求。

JB220 pile driving rig has large diameter leader, can bear large pulling force and meet the heavy load requirements of large series of drilling rig.

4

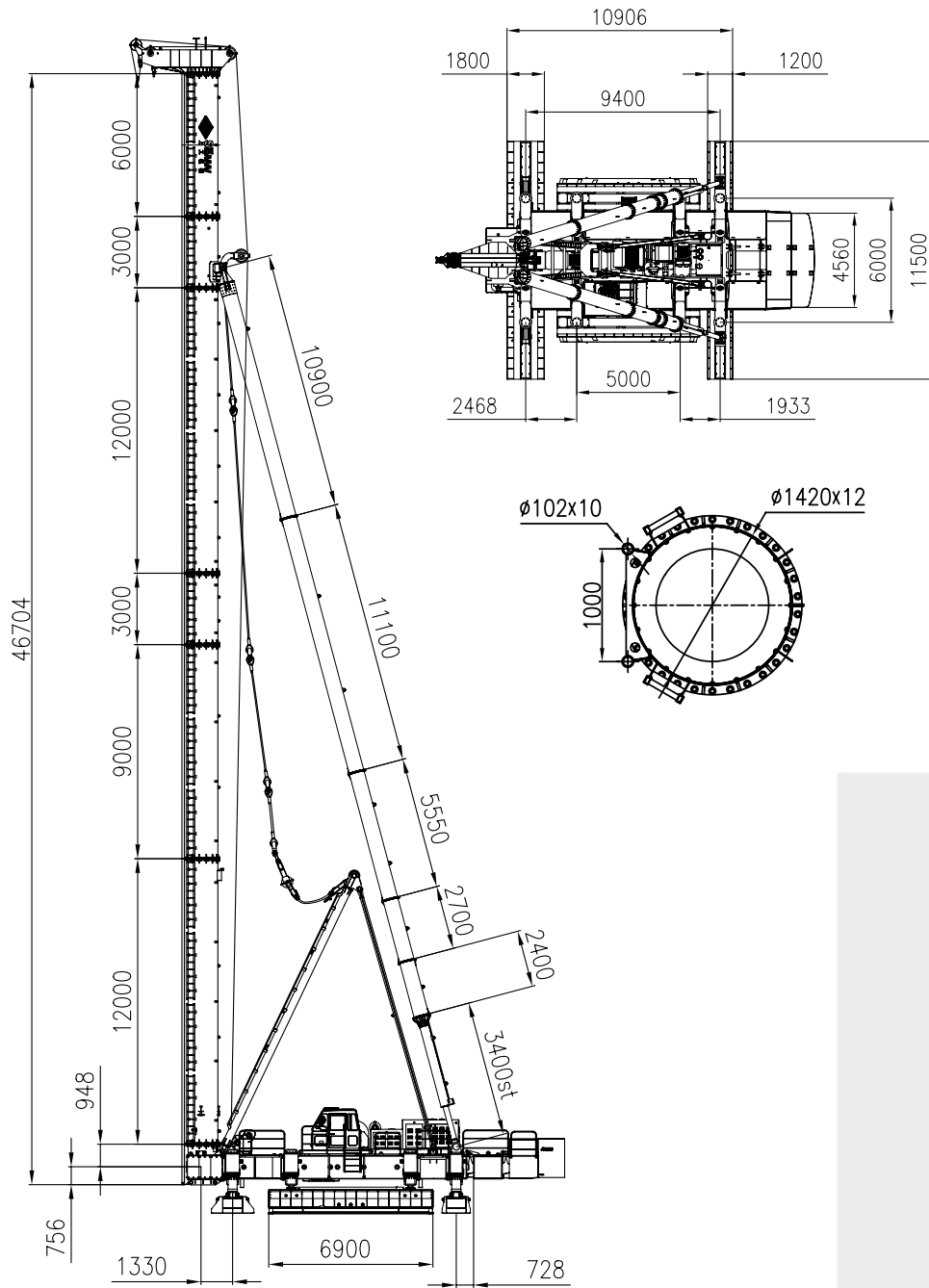
JB220打桩架主平台内部结构优化，提高抗弯强度、具备更强大的稳定性。

JB220 main platform internal structure optimization, the bending strength improves, with more powerful stability.



主要技术参数 Specifications

项目 Item		JB220全液压步履式打桩架 JB220 Hydraulic Walking Piling Rig
立柱总长度 (m) Total length of leader (m)		46.7
立柱筒体直径 (mm) Diameter of leader (mm)		ø1420
立柱导轨中心距 (mm) Center distance between leader and mounted equipment (mm)		1000 × ø102
立柱角度调整范围 (左右方向) (°) Leader inclination angle (left to right) (°)		± 1.5
斜撑油缸行程 (mm) Backstay stroke (mm)		3400
立柱微调油缸行程 (mm) Leader trimming cylinder stroke (mm)		350
最大钻孔机型号 Max. auger model		DCM4132处理机
最大柴油锤型号 Max. diesel hammer model		D220
最大立柱长度 (m) Max. leader length (m)		46.7
最大立柱长度时最大拉拔力 (kN) Max. pulling force (with Max. leader) (kN)		1200
液压卷扬机 (吊挂 钻孔机、柴油锤) Hydraulic winch (for mounting auger, diesel hammer)	单绳拉力 (kN) Pulling force of single rope (kN)	140max
	绳速 (m/min) Winding and rewinding peed (m/min)	0 ~ 24
	钢丝绳直径 (mm) Rope diameter (mm)	ø26
	容绳量 (m) Drum capacity (m)	800
液压卷扬机 (起架、吊钻杆、吊桩) Hydraulic winch (for uplift, drilling pipe, pile)	单绳拉力 (kN) Pulling force of single rope (kN)	110 max
	绳速 (m/min) Winding and rewinding peed (m/min)	30
	钢丝绳直径 (mm) Rope diameter (mm)	ø22
	容绳量 (m) Drum capacity (m)	300
平台回转角度 (°) Swing angle (°)		± 10
桩架横向移动 Transverse travel	速度 (m/min) Travel speed (m/min)	≤ 3.4
	步长 (mm) Travel step (mm)	3100
桩架纵向移动 Vertical travel	速度 (m/min) Travel speed (m/min)	≤ 1.3
	步长 (mm) Travel step (mm)	800
桩架顶升 Uplift of the track	速度 (m/min) Speed (m/min)	≤ 0.44
	高度 (mm) Height (mm)	500
履板轨距 Distance between tracks	工作时 (mm) Working (mm)	9400
	移位时 (mm) Travelling (mm)	6000
轮距 Distance between pulleys in track	工作时 (mm) Working (mm)	5800
	移位时 (mm) Travelling (mm)	5000
横向履板 Transverse-moving track	长度 (mm) Length (mm)	11500
	宽度 (mm) Width (mm)	1806/1206
纵向履板 Vertical-moving track	长度 (mm) Length (mm)	6900
	宽度 (mm) Width (mm)	2000
外伸梁与平台联接方式 Connection between outrigger beam and platform		销轴回转、油缸伸缩 Pin rotary, cylinder expanding
接地比压 (Mpa) Average ground pressure (Mpa)		≤ 0.1
电动机功率 (kw) Motor power (kw)		75
液压系统压力 (Mpa) Hydraulic crowded system (Mpa)		25/20
液压系统操纵方式 Hydraulic crowded system operation		手动及电气控制 Manual & electric control
打桩机总重量 (t) Total weight of piling rig (T)		≈ 223



- 技术参数的更改恕不另行通知
Specifications are subjected to change without prior notice.



24小时服务热线:
24hours service line:

400-888-1749



产品购买不是终点，而是开始——**我们服务的开始**

FOR US, GETTING YOUR ORDER DOESN'T MEAN FINISHING THE SALE; IT IS JUST THE BEGINNING OF OUR SERVICE!



服务·接待 FREE-CALL CENTER SERVICE

- ▶ 24小时免费服务热线4008881749，全天候为您提供产品咨询、服务受理；
- ▶ 如果您对我们的产品感兴趣，我们的销售人员会耐心接待您，亦可上门为您提供相关咨询及介绍。
- ▶ We provide free-call center service for 24hours. For further information of SEMW products or after-sale service, please call us at+0086-21-4008881749. We will provide information or solutions you need.



咨询·方案 CONSULTANCY & SOLUTIONS

- ▶ 施工过程中，如遇疑难问题，我们免费为您提供技术咨询；
- ▶ 我们拥有一支经验丰富的工程师团队，可根据您实际的施工要求、地质情况，为您量身定制更合理的解决方案。
- ▶ Our professional team offers free consulting services according to different job sites, soil conditions and your requirements.



调试 · 培训 TESTING & TRAINING

- ▶ 免费指导安装调试产品，直至产品交付正常使用；
- ▶ 如有需要，我们可提供有偿现场施工工艺指导及培训，确保设备操作人员掌握设备的正确使用方法、保养要求及常见故障的正确诊断和排除方法。
- ▶ SEMW is committed to free guidance of installation and testing, to make sure that you can make proper operations.
- ▶ We will offer training on site if it is necessary, to make sure you know the correct way for maintenance, analysis and debugging of the malfunctions.

SERVICES



维修 · 保养 MAINTENANCE & REPAIR

- ▶ 我们在全中国拥有多个售后服务网点，能满足您的维修、保养、配件供应需求。
- ▶ 易损件供货充足，服务响应速度快。
- ▶ 经验丰富的专业服务工程师队伍时刻待命，随时响应客户的服务需求。
- ▶ 对产品提供全生命周期服务保障。
- ▶ We have offices in many places in China, easy for maintenance.
- ▶ Sufficient supplies for spare parts and wearing parts.
- ▶ Our service team has a wide range of professional experience on any size project large or small. They provide best solutions with quick response.



回访 · 维系 CUSTOMERS & CONNECTIONS

- ▶ 呼叫中心100%服务记录回访，定期进行客户满意度调查；
- ▶ 客户俱乐部：定期为您提供更新产品、分享更全面技术信息、享受更多优质服务。
- ▶ After-sale customer file was set up for better understanding your need and feedback.
- ▶ More services are provided, such as, sending info of new released products, latest technology. We also provide special offer for you.

我们的产品, N个工程的选择

SEMW PRODUCTS, YOUR BEST CHOICE!



北仑宁波港码头项目
BEILUN NINGBO PORT PROJECT

使用产品: 柴油锤+JB180
Product: Diesel Pile Hammer & JB180



武汉水岸国际项目
WUHAN URBAN COMPLEX

使用产品: ZLD180+JB160A
Product: ZLD180& JB160A



香港机场第三跑道项目
HONGKONG AIRPORT 3rd RUNWAY PROJECT

使用产品: DCM440+JB220
Product: DCM440 & JB220



菲律宾项目
PHILIPPINE PROJECT

使用产品: D138柴油锤+JB160A
Product: D138&JB160A



苏州东方之门项目
THE GATE OF THE ORIENT, SUZHOU

使用产品: 超级ZLD220+JB180
Product: ZLD220 & JB180



上海世博园项目
SHANGHAI EXPO SITE

使用产品: 超级ZLD220+JB160A
Product: ZLD220 & JB160A



上海虹桥枢纽项目
HONGQIAO CBD, SHANGHAI

使用产品: 超强ZLD180+JB160A
Product: ZLD180 & JB160A



马来西亚项目
MALAYSIA PROJECT

使用产品: ZLD180+JB160A
Product: ZLD180+JB160A



广州地铁项目
GUANGZHOU METRO PROJECT

使用产品: ZLD330+JB180
Product: ZLD330&JB180



墨西哥项目
MEXICAN PROJECT

使用产品: D100柴油锤+JB160A
Product: D100&JB160A



杭州项目
HANGZHOU PROJECT

使用产品: 长螺旋钻机+JB170
Product: Long Auger&JB170



上海项目
SHANGHAI PROJECT

使用产品: ZLD330+JB170
Product: ZLD330&JB170

地下基础施工整体解决方案专家

EXPERTISE IN DELIVERING TURNKEY SOLUTIONS TO DEEP FOUNDATION ISSUES

上海工程机械厂有限公司 SHANGHAI ENGINEERING MACHINERY CO.,LTD.

地址：中国上海市宝山区杨南路258号

邮编：201901

销售热线：021-56776562 / 56656718

传真：021-56039876 / 56036931

配件销售：021-56771749

外贸热线：021-66308831

租赁热线：021-56651055*2216

售后服务热线：4008881749

售后服务监督热线：021-56779934

电子邮箱：sales@semw.com

网址：www.semw.com

Add: No.258 Yangnan Road Shanghai,China(201901)

Sales Tel: +86-21-56776562 / 56656718

Fax: +86-21-56039876 / 56036931

Spare Parts Sales Tel: +86-21-56771749

Foreign Trade Tel: +86-21-66308831

Service Tel: 4008881749

Rental Tel: +86-21-56651055*2216

Service Supervisor Tel: +86-21-56779934

E-mail: sales@semw.com

Web site: www.semw.com

